

BMS/TS

by **Adaptigent™**

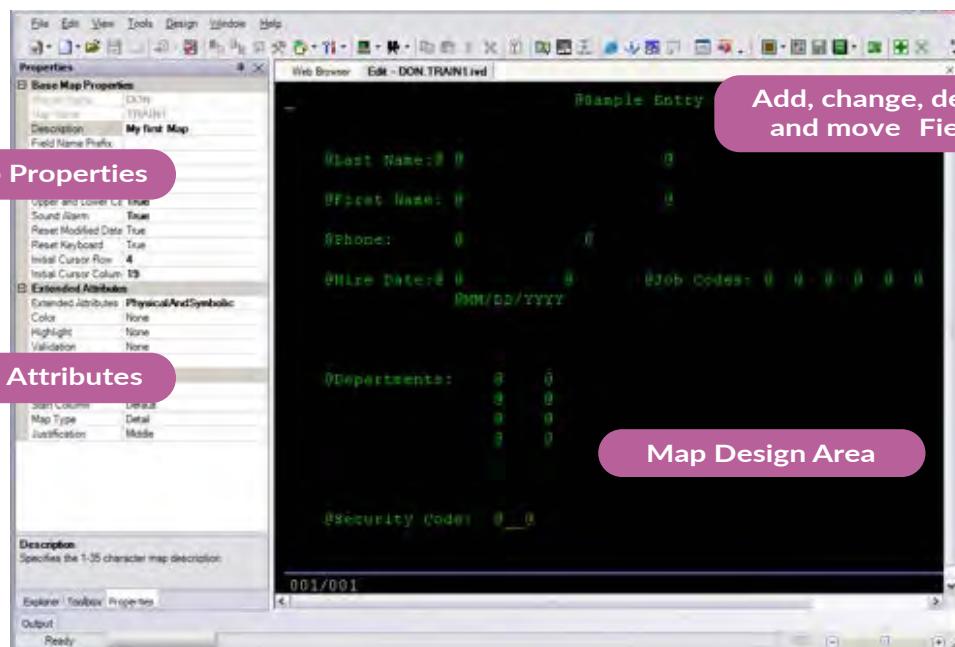
A powerful BMS screen generator that extends access to mainframe applications

BMS/TS Package Functionality

BMS/TS is an online CICS MAPSET/MAP design and management system that uses online CICS transaction design to test and implement BMS maps. It includes functions that customers will find useful as they increase efficiency and productivity. It supports all terminal types and extended attribute combinations. In addition, it supports extra occurs types that effectively enhance programmer productivity.

BMS Studio

The BMS Studio offers a Microsoft-based graphical user interface and IDE. Clients using Windows or 3270 devices can share the BMS/TS mapset repository (the xx\$FILE) and take advantage of SOA technologies, using built-in web services to extend the capabilities of BMS/TS.



Installation

Installation is fast and easy. It installs like most CICS applications. Simply drop down the LOADLIB, update CICS CSD, define the VSAM KSDS file and that is it.

Screen Design

Screen design is supported by BMS/TS on all terminal sizes. Design from a free form full screen view of a map. Paint the screen as you would like to see it, add input/output fields, and submit your map for cataloging to your CICS LOADLIB and COPYLIB. At the end of the design process the result is a complete BMS map. No assemblies are needed.

BMS/TS submits your map directly to your CICS LOADLIB and COPYLIB. No need for those old form DFH macros. Maintenance is easy. You can update your map online, and resubmit for online verification of your map. You see exactly what the user will see once the map is part of your CICS application. Our online verification is not a simulation. You are testing the real map using live BMS.

PREVAL/TS

It can include rules in your map to check field values and other field attributes. This can help you deliver a prototype application to your user before you write a line of code. PREVAL/TS can also be used to supplement your current CICS application edit checks. No coding changes when you use PREVAL/TS so implementation is faster and can be used with third party applications.

PUNCH

It doesn't require the use of DFH macros. However, we do supply a batch utility that will produce the DFH macros if you need them for some business purpose.

Web

WEB uses the CICS bridge support to create Web enabled CICS applications. BMS/TS makes it easy to create your HTML templates. Just design your map as you would normally for CICS, then, at submit time choose to create an HTML template for use with the bridge. You will find that our templates are more robust and better designed than the bridge default templates.

Central Repository

It allows all design activity to be kept in one central location. Easy to backup and maintain. Online functions give you full access to the file for maintenance, copy, rename, etc.

Security

Security allows multiple development users of BMS/TS. You can implement internal BMS/TS security. BMS/TS security will give you the ability to check users sign-on USERID and restrict access to BMS/TS.

Batch Utilities

Batch utilities help orgs that have maps which they have already created with other design tools, usually DFH macros. BMS/TS supplies a conversion utility that can take those maps and convert them to the BMS/TS repository. This will give you the ability to import your existing maps and maintain them going forward.

Batch utilities also supply a backup and restore of the library or members within the library. We also supply utilities for printing maps, getting a directory list, etc.